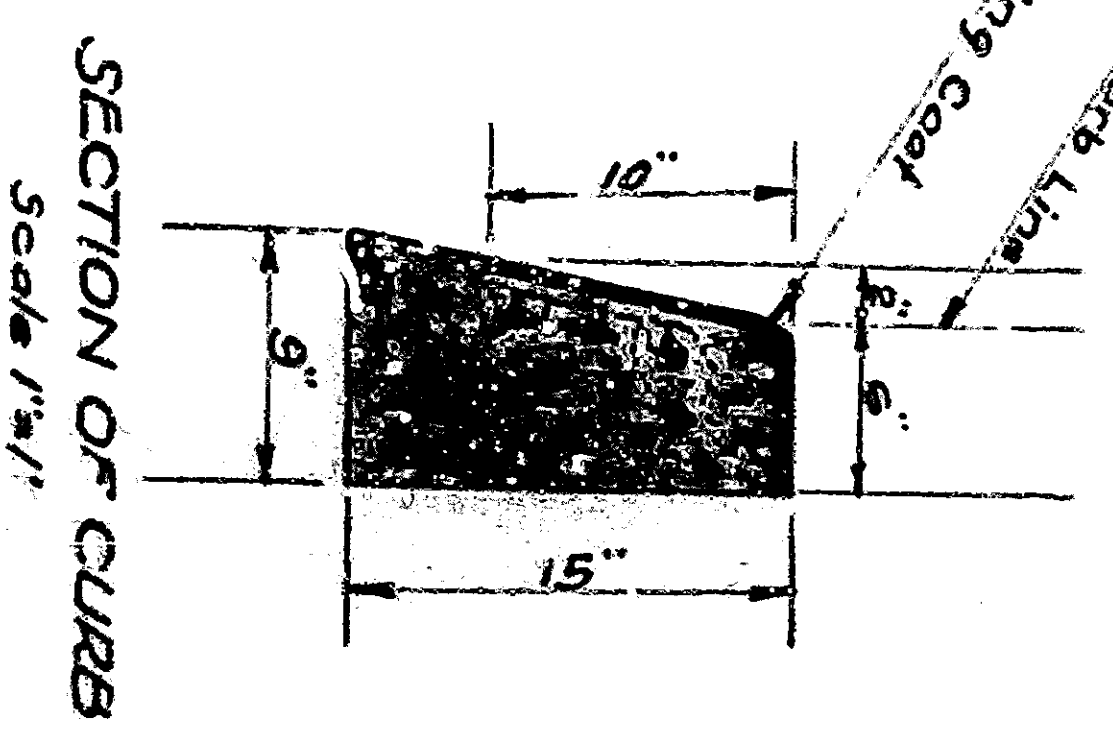
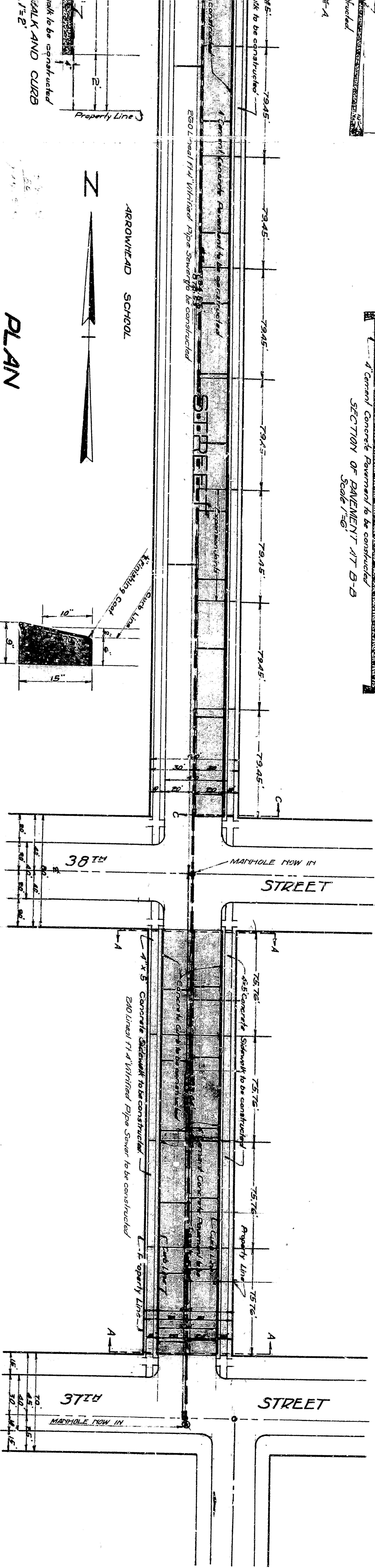
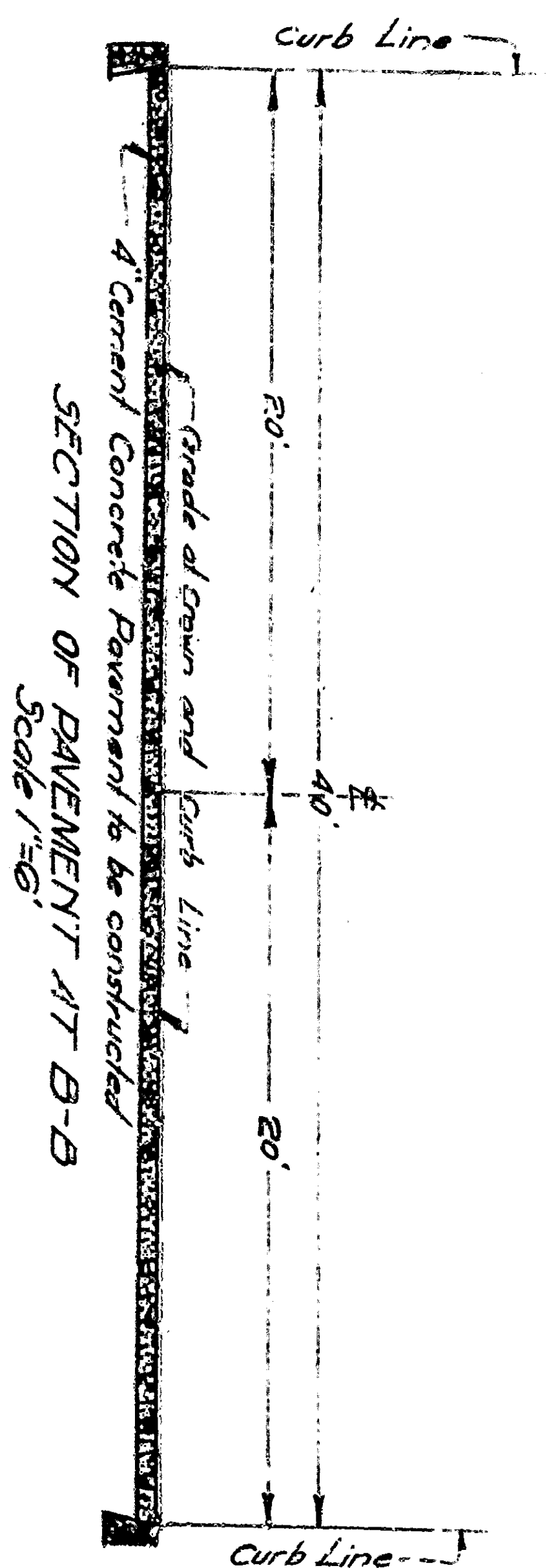


NOT Constructed



PROFILE
Black Line shows Approximate Ground Surface
Red Line shows Grade to which work shall be done
Black dotted line shows Profile of Sewer Pipe
Scale: Vertical 1/32'

SHEET No 1
PART No 1
PLAN No 900
FOR THE IMPROVEMENT OF
GENEVIEVE STREET
BETWEEN
37TH STREET AND RALSTON AVENUE
BETWEEN
37TH STREET, 38TH STREET AND JORDAN STREET
SERRA WAY AND MOUNTAIN VIEW AVENUE
MOUNTAIN VIEW AVENUE
BETWEEN
37TH STREET AND RALSTON AVENUE
IN THE
CITY OF SAN BERNARDINO CALIFORNIA
C.E. JOHNSON
CITY ENGINEER
SCALE AS SHOWN

LEGEND
with means inch or inches
or 1/16 inch foot or feet
No means Number
A means Area
E means Elevation
G means General
S means Sidewalk
G.S. means General Sewer
V.P. means Vitrified Pipe
C.S. means Concrete Sewer
C.S.P. means Concrete Sewer Pipe
V.P.S. means Vitrified Pipe Sewer
T.M. means Title to Street
M.S. means Mountain View Street
S.S. means Sierra Street
J.S. means Jordan Street
M.A. means Mountain View Avenue
S.W. means Sierra Way
M.V.A. means Mountain View Avenue
R.A. means Ralston Avenue

NOTE:
Title to GENEVIEVE STREET by the City of San Bernardino is by dedication of the State by the City of San Bernardino, Page 65 Records of San Bernardino, County, California.

GRADE ORDINANCE:
Grade of GENEVIEVE STREET established March 22/1925 Ordinance No. 1080.

PLAN ADOPTED

SEWER DETAIL
Local 7.4 Vitrified Pipe Sewer to be constructed 202.00